

## FEATURES & BENEFITS

### EASY ACTIVATION

Pulling down the eyewash arm will begin flushing the 60.6 liter portable at 1.5 L during the required 15 minutes, creating a full patterned flushing of the eyes.

### ROBUST CONSTRUCTION

FDA approved high-density green polyethylene tank provides the light and durable construction required in a portable unit.

### SMART DESIGN

Tank comes complete with a wide fill opening and threaded cap for quick inspection, cleaning, and filling. Unit also comes equipped with top and side handles making relocation easy.

### WIDE APPLICATIONS

Suitable for almost all working environment, easy to transport and mount on the wall as well as on the shelf.



## OPTIONS

- Thermal Protection Jacket: Model 9125 is a white thermal protection jacket for 7500 series gravity eyewashes.
- Water Additive: Model 9082, bacteriostatic preservative for use in portable eyewash stations. One 236 ml bottle will preserve 18.9 to 75.7 litres of potable water for up to four months.

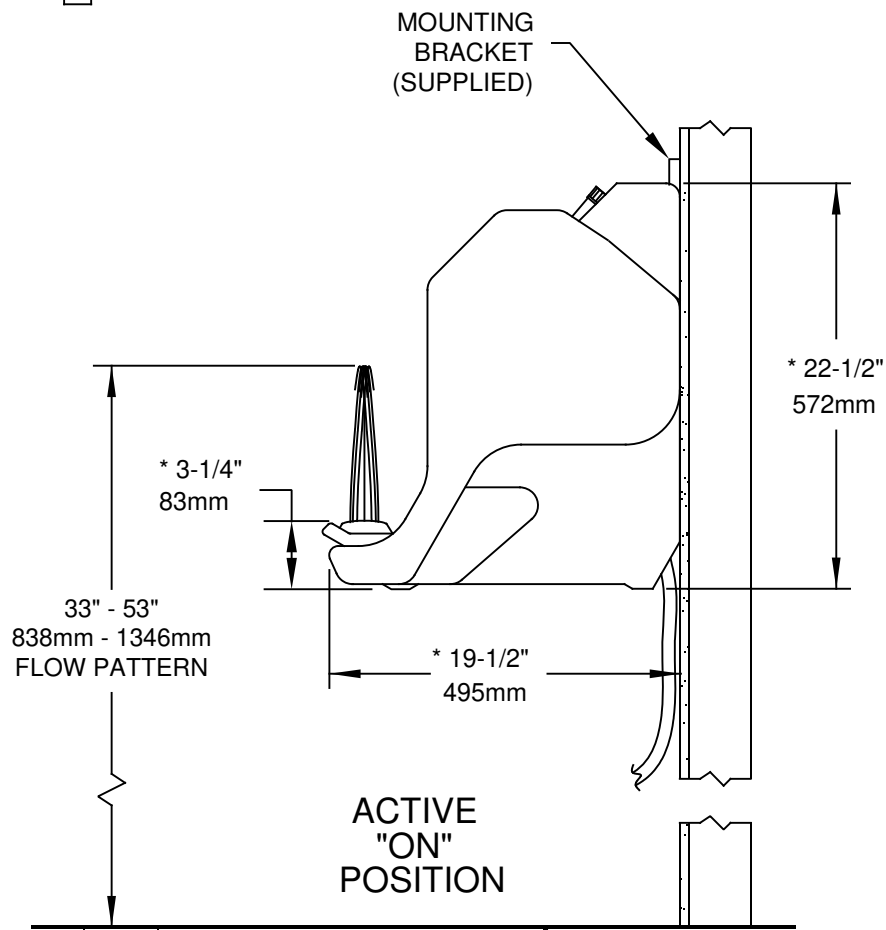
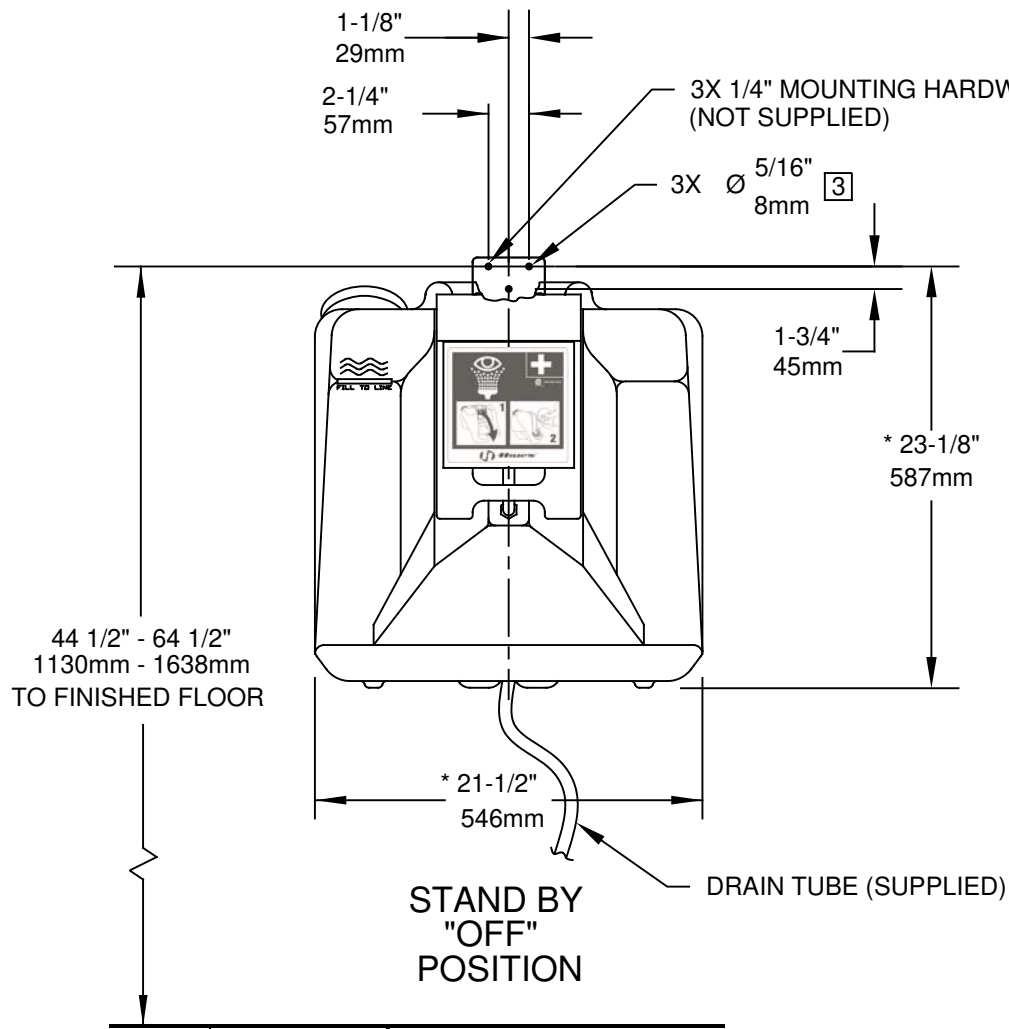
For more information, visit [www.haws.ch](http://www.haws.ch) or call + 41 (0)34 420 60 00.

## SPECIFICATIONS

- Ideal where mains water supply is not available
- Suitable for indoor and outdoor use
- Delivers 15 minutes flushing time
- 60 l high-density green polyethylene tank
- Easy activation via pull-down yellow spray arm
- Wide opening for quick and easy filling, cleaning and inspection
- Easy relocation due to top and side handles
- Dimensions (H x W x D): 572 x 546 x 495 mm
- Wall mounting bracket included
- Meets the ANSI Z358.1 Standard for Emergency Eyewash and Shower Equipment.


## APPLICATIONS

The Haws portable eyewash model 7500 is ideal for remote locations or where a continuous water supply is not available. The model 7500 features a 60 liters tank providing a continuous flow for 15 minutes. When the yellow spray arm is pulled down, the model 7500 delivers instantly a soft stream that rinses both eyes. Wall or shelf mounted, this portable self-contained portable eyewash can be placed virtually anywhere on a working environment.



#### NOTES:

1. TO COMPLY WITH ANSI Z358.1-2014 FOR EMERGENCY EYEWASH OR EYE/FACE WASH: EYEWASH OR EYE/FACE WASH SHALL BE POSITIONED SUCH THAT FLUSHING FLUID PATTERN IS NOT LESS THAN 33" (838mm) AND NO GREATER THAN 53" (1346mm) FROM SURFACE ON WHICH USER STANDS; AND 6.0" (153mm) MINIMUM FROM WALL OR NEAREST OBSTRUCTION.
2. UNIT MUST BE LEVEL FROM FRONT TO BACK AND SIDE TO SIDE.
3. ALL THREE MOUNTING HOLES ON MOUNTING-BRACKET MUST BE USED TO PROPERLY SECURE EYEWASH UNIT TO WALL.
4. WHEN INSTALLING THIS UNIT, LOCAL, STATE, OR FEDERAL CODES SHOULD BE ADHERED TO FOR INSTALLATION DIMENSIONS (LOCATIONS), WASTE AND SUPPLY REQUIREMENTS, ETC.
5. \*DIMENSIONS MAY VARY ±1/2" [12.7mm]

		<b>Haws®</b>		1455 KLEPPE LANE SPARKS, NEVADA 89431 (775) 359-4712 FAX (775) 359-7424 E-MAIL: HAWS@HAWS.CO.COM WEBSITE: WWW.HAWS.CO.COM	
		ECN NO. REVISED PER BY: ECN: 5471 DB		MODEL(S) 7500	
DRAWN: C.H.	DATE: 5/21/91	CHKD.: JS	PART NUMBER 0002080058.D		
APPROVED: IR	DATE: 03/18/20	SCALE: 1/10		DRAWING TYPE: INSTALLATION	SIZE: A
SHEET 1 OF 1					REVISION 22