



Haws®

model 7260B AXION

Wall mount eye wash 7260B AXION - ABS bowl

FEATURES & BENEFITS

AXION FACE+EYEWASH HEAD

The patented AXION shower head with integral flow control delivers reliable a compliant water jet for rinsing eyes and face. The unique, centered AXION water jet eliminates the main issues of other eye wash systems to provide proper first aid.

LARGE BOWL

The 28 cm round green ABS plastic receptor is resistant to damage from alkalis.

SAFE OPERATION

Chrome-plated brass in-line 50 x 50 mesh water strainer prevents debris from reaching the eye wash so the unit stays functioning at its best. Strainer is easily serviceable.

HIGH QUALITY

Face+eye wash station and valve assembly is pre-built and fully water/pressure tested to ensure no leaks and proper function.



OPTIONS

- Stainless steel dust cover model 9102 protects the AXION eye wash head as well as the bowl.
- Wall-mounted foot control unit SP220W includes a powder-coated aluminum pedal and a wall bracket for hands-free operation of the eye wash.
- Proximity switch SP 165E for the activation of an external alarm system
- Numerous solutions for the supply of tepid water

For more information, visit www.haws.ch or call + 41(0)34 420 60 00.

SPECIFICATIONS

Technical information

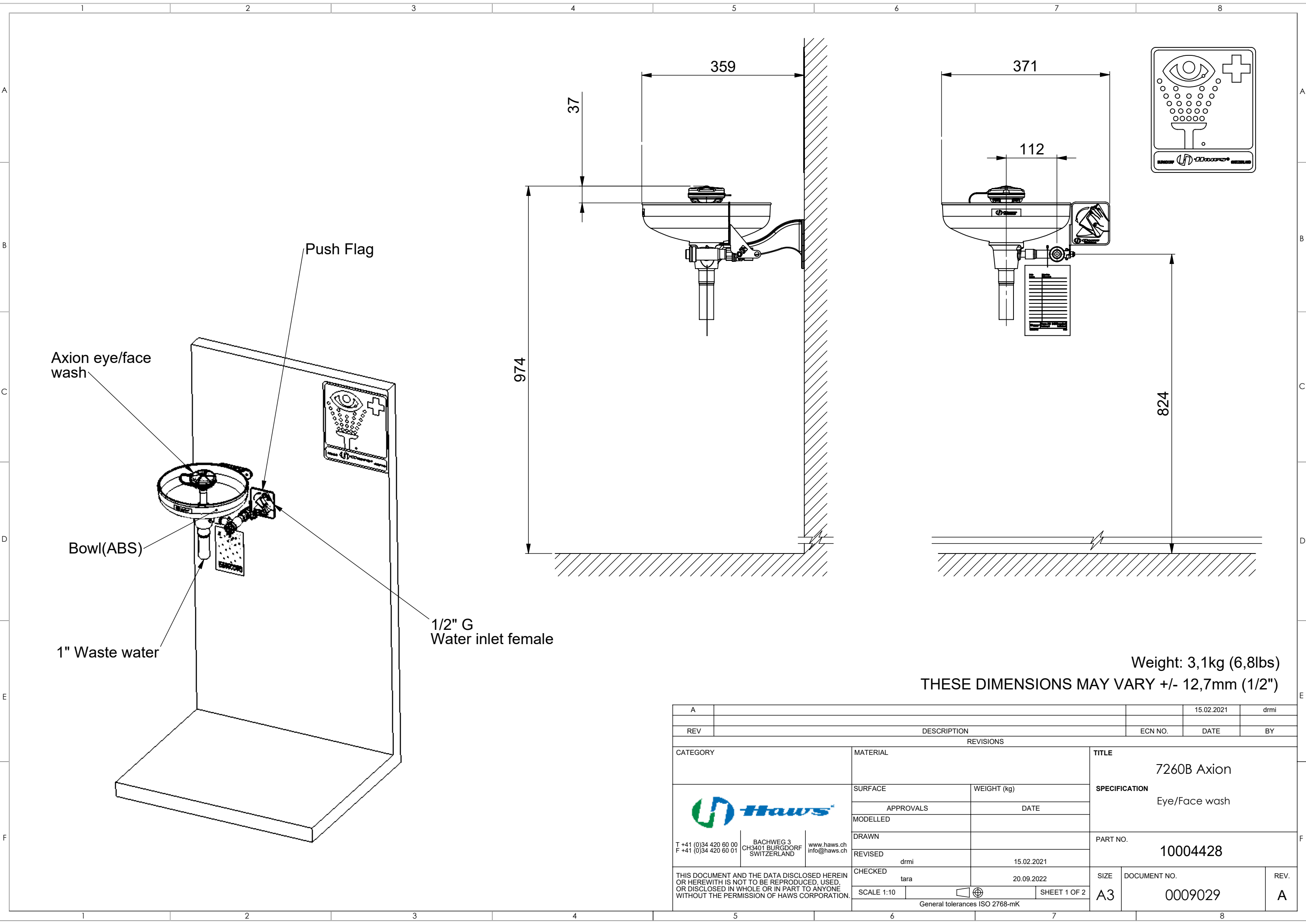
- Water flow: 14 liters/minute
- Application: indoor/outdoor
- Dimensions (H x W x D): 300 x 371 x 359 mm
- Water inlet: 1/2" G
- Water outlet: 1" G

Characteristics


- Pre-built and fully water/pressure tested
- Increased safety due to AXION face+eyewash head
- Alkalis resistant 28 cm green ABS plastic bowl
- Reliable chrome-plated brass stay-open ball valve with stainless steel ball and stem
- Chrome plated brass in-line mesh strainer to prevent debris
- Including universal safety sign

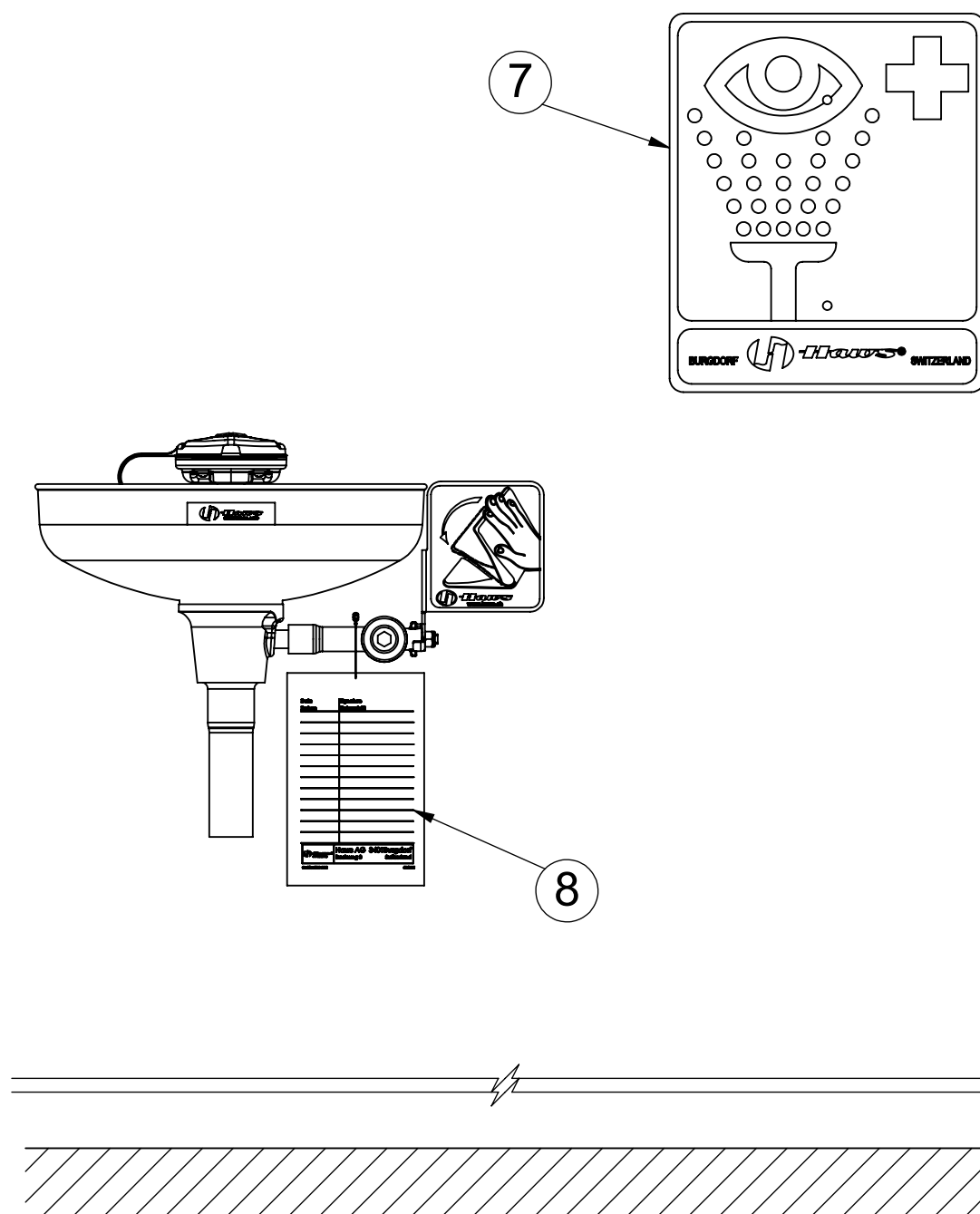
APPLICATIONS

The Haws eye wash model 7260B AXION is the optimal solution for industrial applications. It complies to the standards EN 15154-2 and ANSI Z358.1. An ABS plastic bowl makes this permanently installed face+eye wash very durable. The patented AXION shower head delivers reliable a compliant water jet for rinsing eyes and face. The unique, centered AXION water jet eliminates the main issues of other eye wash systems to provide proper first aid.





Weight: 3,1kg (6,8lbs)
THESE DIMENSIONS MAY VARY +/- 12,7mm (1/2")

A				15.02.2021	drmi
REV	DESCRIPTION			ECN NO.	DATE
CATEGORY		MATERIAL		REVISIONS	
 T +41 (0)34 420 60 00 F +41 (0)34 420 60 01 BACHWEG 3 CH3401 BURGDORF SWITZERLAND www.haws.ch info@haws.ch		SURFACE		WEIGHT (kg)	
		APPROVALS		DATE	
		MODELLED			
		DRAWN			
THIS DOCUMENT AND THE DATA DISCLOSED HEREIN OR HEREWITH IS NOT TO BE REPRODUCED, USED, OR DISCLOSED IN WHOLE OR IN PART TO ANYONE WITHOUT THE PERMISSION OF HAWS CORPORATION.		REVISED			
		CHECKED			
		SCALE 1:10		SHEET 1 OF 2	
				General tolerances ISO 2768-mK	
				TITLE	
				7260B Axion	
				SPECIFICATION	
				Eye/Face wash	
				PART NO.	
				10004428	
				SIZE	DOCUMENT NO.
				A3	0009029
				REV.	A



PARTS BREAKDOWN

ITEM	PART NU.	DESCRIPTION
1	SP65	Axion eye/face wash head
2	SP9091	Dust Cover (ABS yellow)
3	SP93	Bowl
4	SP509	Strainer
5	SP80	Bracket
6	SP229	Valve assembly
7	SP175	Eye wash sign
8	SP170	Test tag
9	SP37.5	Flow control

A						15.02.2021		drmi		
REV	DESCRIPTION				ECN NO.		DATE		BY	
REVISIONS										
CATEGORY			MATERIAL			TITLE				
 T +41 (0)34 420 60 00 F +41 (0)34 420 60 01 BACHWEG 3 CH3401 BURGDORF SWITZERLAND www.haws.ch info@haws.ch			SURFACE		WEIGHT (kg)		SPECIFICATION 7260B Axion Eye/Face wash			
			APPROVALS		DATE					
			MODELLED							
			DRAWN				PART NO. 10004428			
			REVISED		drmi 15.02.2021					
THIS DOCUMENT AND THE DATA DISCLOSED HEREIN OR HEREWITH IS NOT TO BE REPRODUCED, USED, OR DISCLOSED IN WHOLE OR IN PART TO ANYONE WITHOUT THE PERMISSION OF HAWS CORPORATION.			CHECKED		tara 20.09.2022		SIZE		DOCUMENT NO.	
			SCALE 1:7				A3		0009029	
					General tolerances ISO 2768-mK					
								REV.		
								A		