

FEATURES & BENEFITS

CONSTRUCTION

1-1/4" hot-dipped galvanized steel pipe and fittings along with powder-coated cast-iron 23 cm diameter floor flange provide corrosion resistance in a long lasting product.

QUALITY CONTROL

Eye/face wash and valve assembly are pre-built and fully water/pressure tested to ensure no leaks and proper function which ultimately reduces installation time.

VALVES

Eye/face wash and shower ball valves are designed to make the flushing of fluid remains occur with the simple pull of a lever or push of a stainless steel flag.

SHOWERHEAD

AXION® MSR ABS plastic drench showerhead uses a hydrodynamic design to give equal distribution of water throughout the entire footprint of flow.

SAFETY

20.3 x 27.3 cm universal combination emergency sign and 53.3 cm self-adhesive high visibility stripe in Safety Green and bright yellow make the unit easily detected in an emergency. Test card to record weekly checks helps maintain the unit's best working quality.

EYE/FACE WASH

AXION® MSR eye/face wash head uses an inverted directional laminar flow to sweep contaminants away from the vulnerable nasal cavity



SPECIFICATIONS

Model 8317 AXION combination shower and eye/face wash shall include the AXION® MSR hydrodynamic designed green ABS plastic showerhead with integral self-regulating 75.7 L flow control, an AXION MSR eye/face wash head shall feature inverted directional laminar flow which achieves Zero Vertical Velocity™. The head is supplied by an integral 14 L flow control, and unit uses chrome-plated brass stay-open shower and eyewash ball valves equipped with stainless steel ball and stem. Unit shall also include powder-coated cast iron 23 cm diameter floor flange, universal sign, self-adhesive high visibility safety green and bright yellow stripes, and 1-1/4" BSP supply.

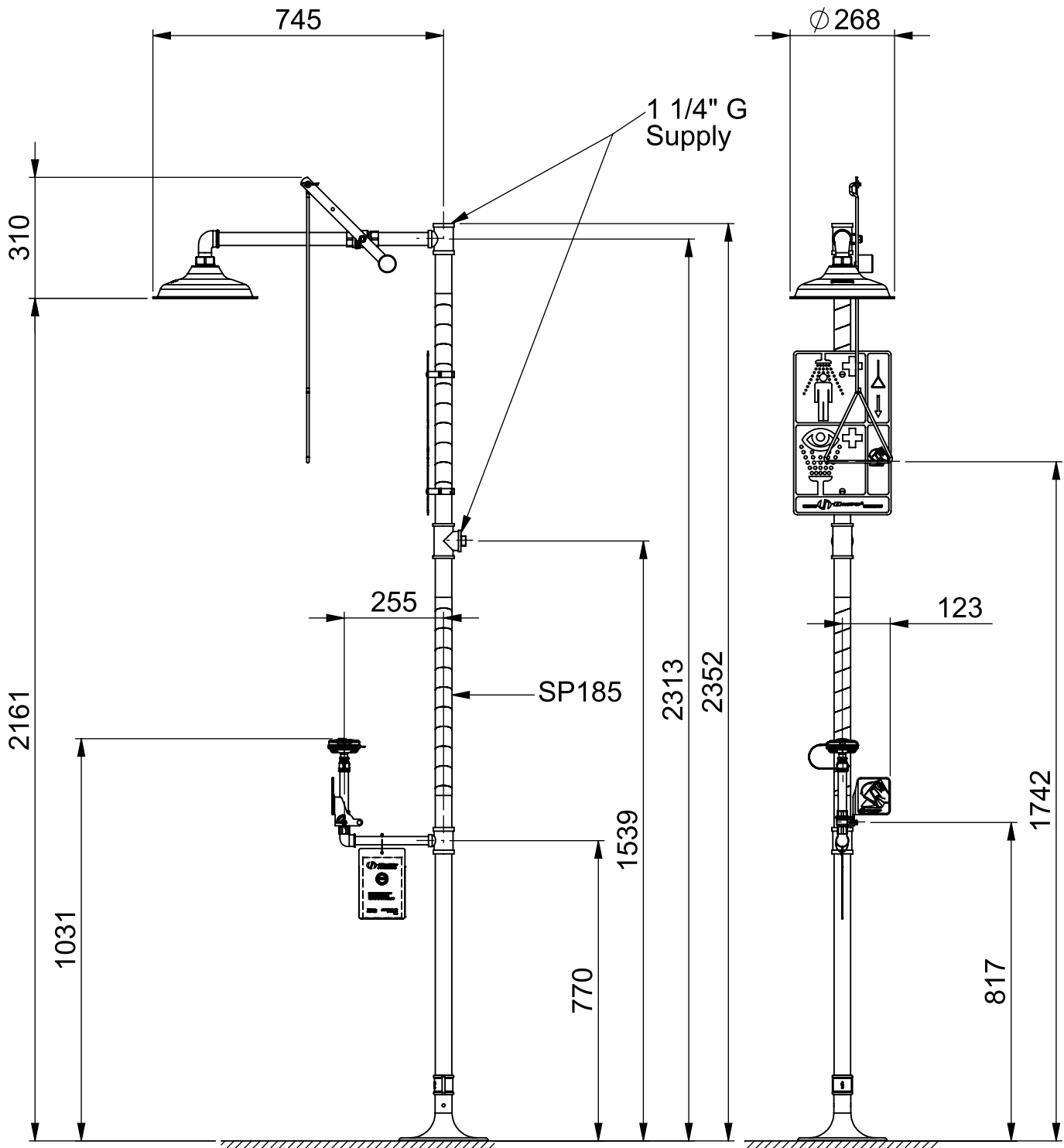
OPTIONS

- Thermostatic Mixing Valve: Model 9201E AXION® Emergency Tempering Valve thermostatically mixes hot and cold water to provide a safe fluid supply for emergency showers and eyewash equipment, with a flow rate of 117.3 L.
- Emergency Alarm System: Model 9001, 1-1/4" 120 VAC emergency alarm and light system. Buzzer and flashing light are activated by an 1-1/4" double pole, double throw flow switch.
- Scald Protection Bleed Valve: Model SP157B, fully engineered scald protection valve.
- AXION® MSR Showerhead: Model SP829SS, AXION® MSR stainless steel drench showerhead with integral 75.7 L flow control.

For more information, visit www.haws.ch or call + 41(0)34 420 60 00.

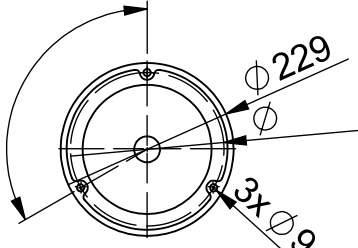
APPLICATIONS

Where the eyes, face, or body of any person may be exposed to injurious or corrosive materials, suitable facilities for quick drenching or flushing of the eyes, face, and body shall be provided within the work area for immediate emergency use. Emergency eye/face wash facilities and deluge showers shall be in unobstructed and accessible locations that require no more than 10 seconds for the injured person to reach. Model 8317 AXION meets the ANSI Z358.1 Standard for Emergency Eyewash and Shower Equipment.



Weight: 17.6kg (38.8lbs)

THESE DIMENSIONS MAY VARY +/- 12,7mm (1/2")



FLOOR FLANGE DETAIL

DATA SHEET



T +41 (0)34 420 60 00
F +41 (0)34 420 60 01

BACHWEG 3
CH3401 BURGENDORF
SWITZERLAND

www.haws.ch
info@haws.ch

TITLE
8317 Axion
Combination Shower/Eyewash

APPROVALS	DATE
DRAWN Jeannine Ruf	19.07.2010
CHECKED Jeannine Ruf	19.07.2010
REVISED Jeannine Ruf	20.02.2012
PART NO.	
ECN NO.	

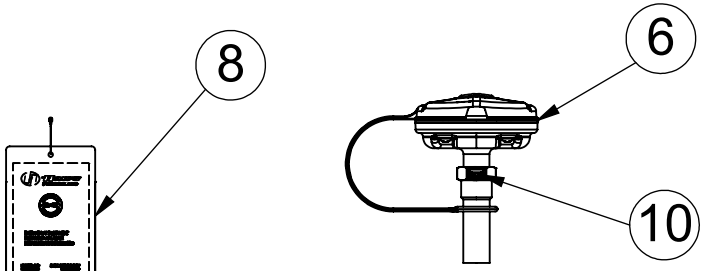
MATERIAL	SIZE DRAW NO. A4	2080152/1	REV. A
SCALE 1:15		SHEET 3 OF 4	

C2/D2	ZONE	REV	DESCRIPTION	ECN	DATE	BY
A			1262776 und 1995 durch 1313996 ersetzt	0100	14.02.2012	RUJ
REVISIONS						

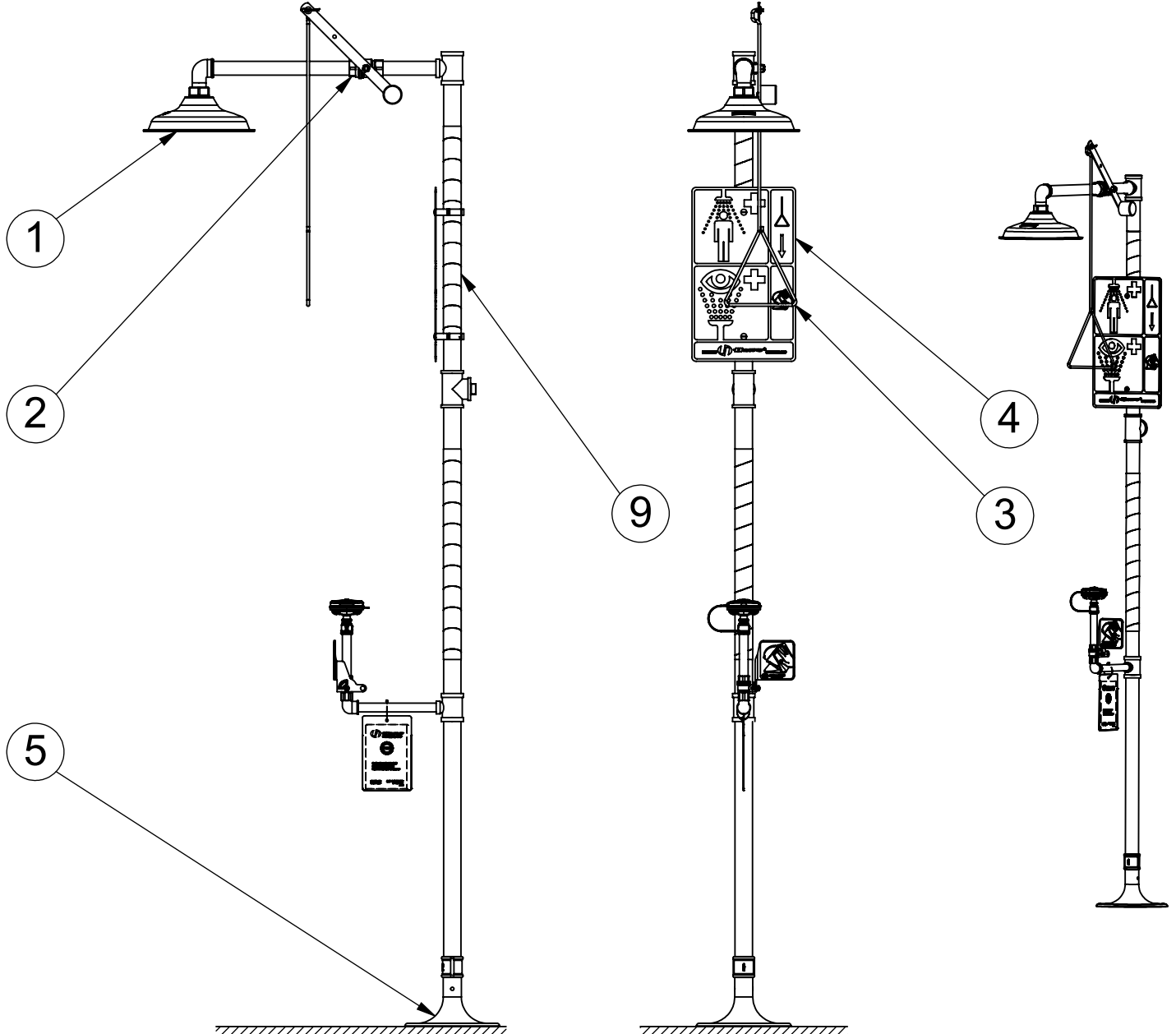
THIS DOCUMENT AND THE DATA DISCLOSED HEREIN OR HEREWITH IS NOT TO BE REPRODUCED, USED, OR DISCLOSED IN WHOLE OR IN PART TO ANYONE WITHOUT THE PERMISSION OF HAWS CORPORATION.

PARTS BREAKDOWN

ITEM	PART NU.	DESCRIPTION
1	SP829	Axion shower head
2	SP260	Valve assembly
3	SP200	Pull rod
4	SP178	Shower sign
5	SP75	Floor flange
6	SP65	Axion eye/face wash head
7	SP238	Valve assembly
8	SP170	Test tag
9	SP185	Stripe tape
10	SP37.5	Flow control



SP65 EYE WASH ASSEMBLY



PARTS BREAKDOWN			
WHEN ORDERING PARTS PLEASE SPECIFY YOUR MODEL NUMBER		T +41 (0)34 420 60 00 CH3401 BURG DORF SWITZERLAND	
		F +41 (0)34 420 60 01 www.haws.ch info@haws.ch	
APPROVALS		TITLE	
		8317 Axion Combination Shower/Eyewash	
DRAWN Jeannine Ruf		DATE 19.07.2010	
CHECKED Jeannine Ruf		DATE 19.07.2010	
REVISED Jeannine Ruf		DATE 20.02.2012	
PART NO.		MATERIAL	
ECN NO.		SIZE DRAW NO.	
		A4 2080152/1	
		SCALE 1:15	
		SHEET 4 OF 4	

C2/D2	A	1262776 und 1995 durch 1313996 ersetzt	0100	14.02.2012	RUJ
ZONE	REV	DESCRIPTION	ECN	DATE	BY
REVISIONS					
THIS DOCUMENT AND THE DATA DISCLOSED HEREIN OR HERewith IS NOT TO BE REPRODUCED, USED, OR DISCLOSED IN WHOLE OR IN PART TO ANYONE WITHOUT THE PERMISSION OF HAWS CORPORATION.					