

## FEATURES & BENEFITS

### HIGHEST CORROSION RESISTANCE

All components are made of type 304 stainless steel and make this combination emergency shower resistant to damage from alkaline, salt solutions, most acids and sun damage.

### AXION FACE+EYE WASH HEAD

The patented AXION® shower head with integral flow control delivers reliable a compliant water jet for rinsing eyes and face. The unique, centered AXION water jet eliminates the main issues of other eye wash systems to provide proper first aid.

### AXION BODY SHOWER NOZZLE

The hydrodynamic designed AXION nozzle of the drench shower delivers a soft and homogenous flow across the entire footprint for highly efficient flushing of the entire body.

### HIGH QUALITY

Face+eye wash station and showerhead and valve assemblies are pre-built and fully water/pressure tested to ensure no leaks and proper function.

## OPTIONS

- Stainless steel foot control unit SP220SS for hands-free operation of the eyewash.
- Emergency alarm system EU 9001.230V.DPDT with amber flashing light and alarm horn at 90 db.
- Stainless steel dust cover model 9102 protects the AXION eyewash head as well as the bowl.
- Privacy curtain model EU 9037 provides shower privacy for removal of contaminated clothing.
- Numerous solutions for the supply of tepid water

For more information, visit [www.haws.ch](http://www.haws.ch) or call + 41(0)34 420 60 00.



## SPECIFICATIONS

### Technical information

- Water flow body shower: 76 liters/minute
- Water flow face+eye wash: 14 liters/minute
- Dimensions (H x W x D): 2410 x 351 x 872 mm
- Water inlet: G 1 1/4" / Water outlet: G 1 1/4"

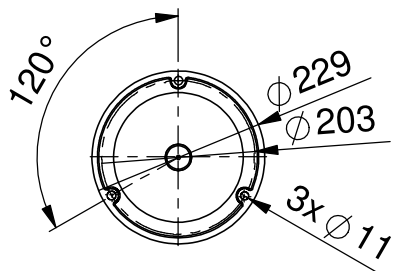
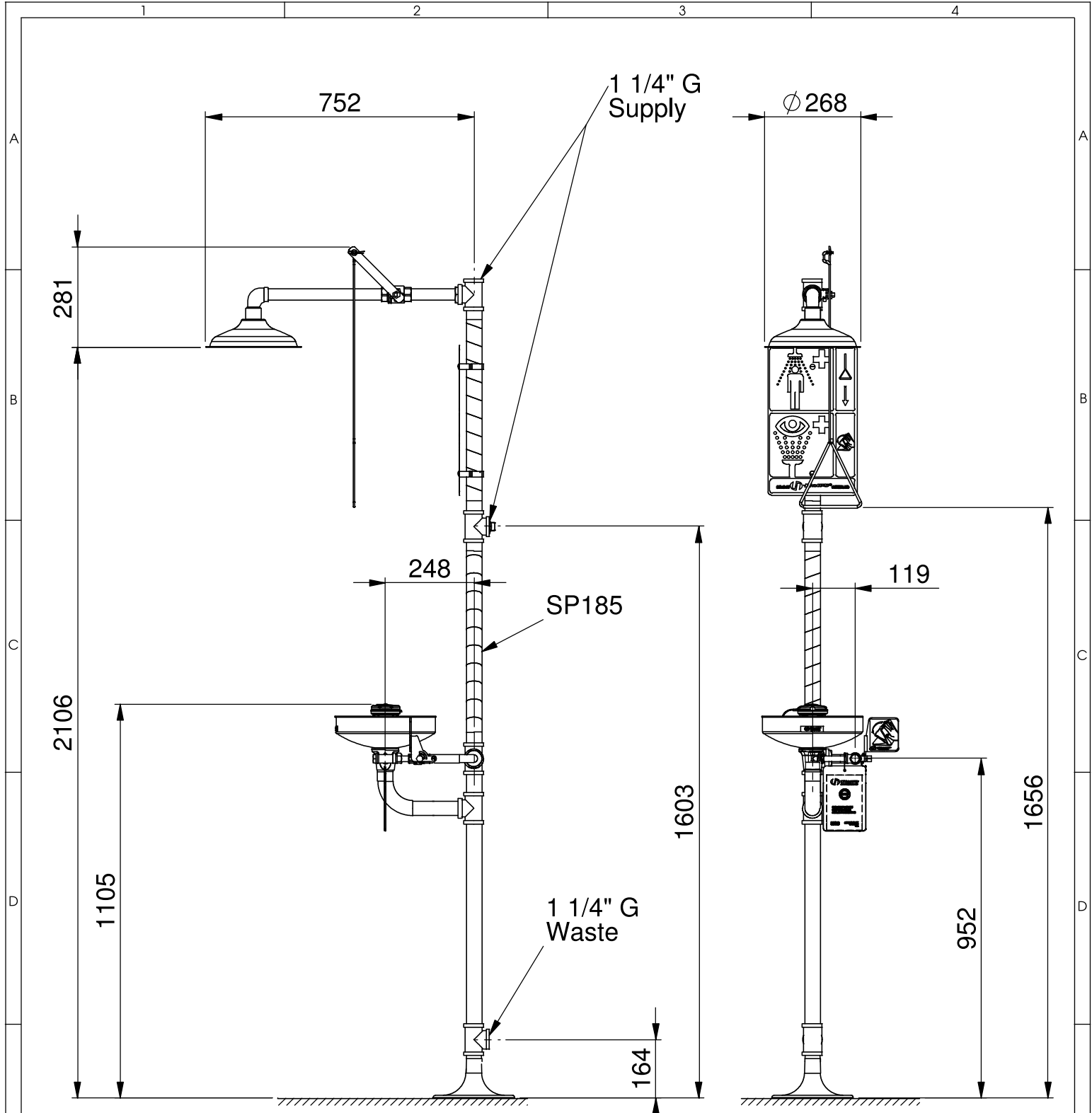
### Characteristics

- Pre-built and water/pressure tested
- Highest corrosion resistance as all components are made of type 304 stainless steel.
- Increased safety due to AXION face+eyewash head, AXION shower nozzle and integral flow control
- Including universal safety sign
- Wide range of options for adapting to on-site requirements

## APPLICATIONS

The Haws® all stainless steel combination emergency shower 8330 AXION consists of an emergency body shower with stainless steel head and an eyewash station with stainless steel bowl. It complies to the standards EN 15154-1, EN 15154-2 and ANSI Z358.1 and is the optimal solution for industrial applications where highest corrosion resistance is required. All components are made of stainless steel and makes this freestanding combination shower extremely corrosion resistant and very rugged.

The combination emergency shower 8330 AXION comprises an AXION® overhead drench shower and an AXION face+eyewash. The eyewash is activated by a push plate and delivers reliable a compliant water jet for rinsing simultaneously eyes and face. The AXION nozzle of the drench shower is activated by a pull-down handle and delivers a soft and homogenous flow across the entire footprint. The unique AXION system eliminates the main issues of other emergency shower and eyewash systems to provide proper first aid.



THESE DIMENSIONS MAY VARY +/- 12,7mm (1/2")

### DATA SHEET



T +41 (0)34 420 60 00 CH3401 BURGDORF SWITZERLAND www.haws.ch info@haws.ch

**TITLE**  
8330 Axion  
Combination Shower & Eye/Face Wash

**MATERIAL**

**SIZE PART NO.**  
A4 2080174/5

**SCALE** 1:15 **SHEET** 3 OF 4

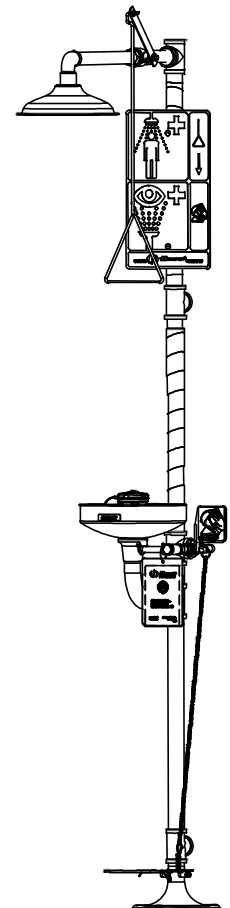
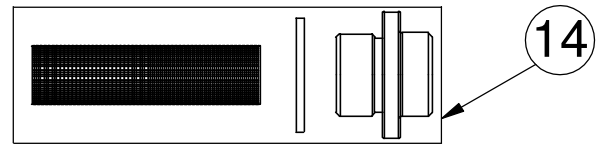
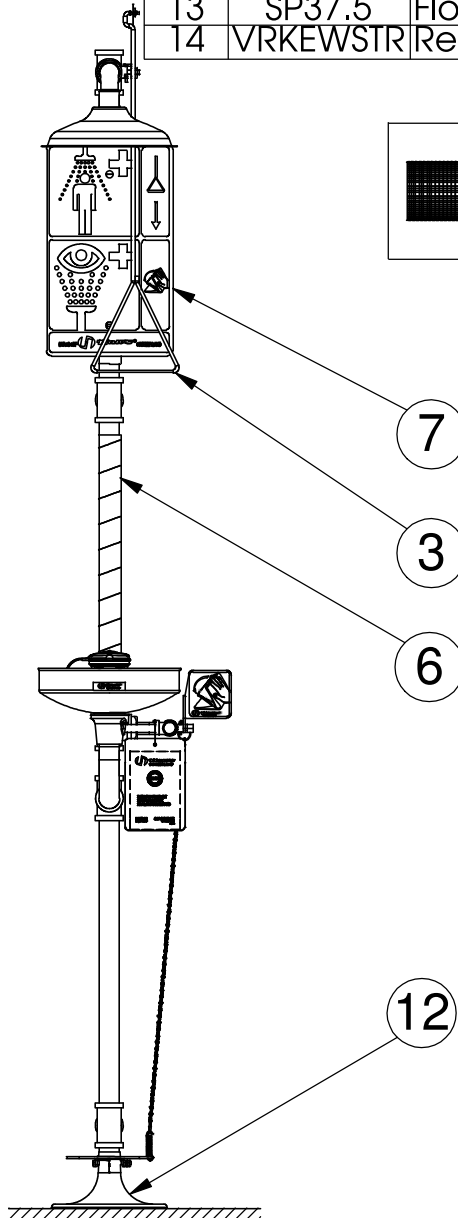
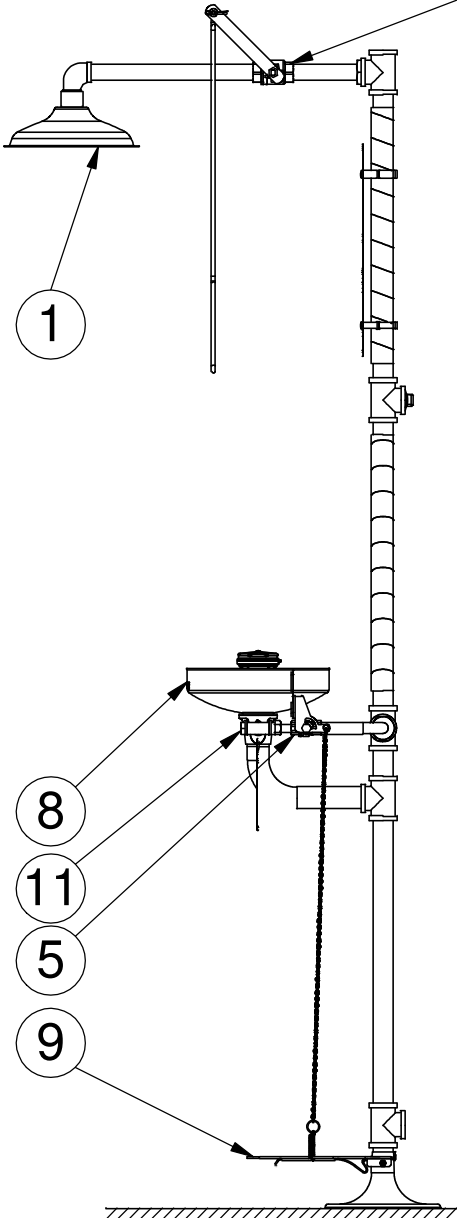
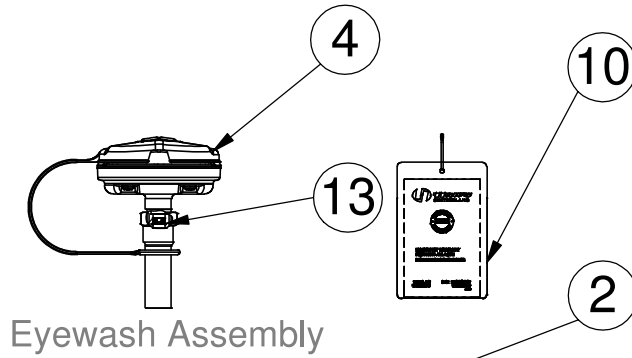
ZONE	REV	DESCRIPTION	ECN	DATE	BY
REVISIONS					

APPROVALS	DATE
DRAWN Jeannine Ruf	08.06.2011
CHECKED Jeannine Ruf	08.06.2011
REVISED Jeannine Ruf	06.02.2012
DRAW-NO.	
ECN NO.	

THIS DOCUMENT AND THE DATA DISCLOSED HEREIN OR HEREWITH IS NOT TO BE REPRODUCED, USED, OR DISCLOSED IN WHOLE OR IN PART TO ANYONE WITHOUT THE PERMISSION OF HAWS CORPORATION.

# PARTS BREAKDOWN

ITEM	PART NU.	DESCRIPTION
1	SP829SS	Axion shower head stainless steel
2	SP265	Valve assembly
3	SP200	Pull rod
4	SP65SS	Axion eye/face wash head
5	SP228	Valve assembly
6	SP185	Stripe tape
7	SP178	Shower sign
8	SP90	Bowl
9	SP220SS	Foot treadle assembly (optional)
10	SP170	Test tag
11	SP509	Strainer
12	SP75SS	Floor flange
13	SP37.5	Flow control
14	VRKEWSTR	Repair kit for SP509



## PARTS BREAKDOWN

**WHEN ORDERING PARTS PLEASE SPECIFY YOUR MODEL NUMBER**

APPROVALS	DATE
DRAWN Jeannine Ruf	08.06.2011
CHECKED Jeannine Ruf	08.06.2011
REVISED Jeannine Ruf	06.02.2012
DRAW-NO.	
ECN NO.	



T +41 (0)34 420 60 00  
F +41 (0)34 420 60 01  
BACHWEG 3  
CH3401 BURGDORF  
SWITZERLAND  
www.haws.ch  
info@haws.ch

**TITLE**  
8330 Axion  
Combination Shower & Eye/Face Wash

**MATERIAL**

**SIZE PART NO.**  
A4 2080174/5  
**REV.**

**SCALE** 1:15

**SHEET** 4 OF 4

ZONE	REV	DESCRIPTION	ECN	DATE	BY
		REVISIONS			

THIS DOCUMENT AND THE DATA DISCLOSED HEREIN OR HEREWITH IS NOT TO BE REPRODUCED, USED, OR DISCLOSED IN WHOLE OR IN PART TO ANYONE WITHOUT THE PERMISSION OF HAWS CORPORATION.