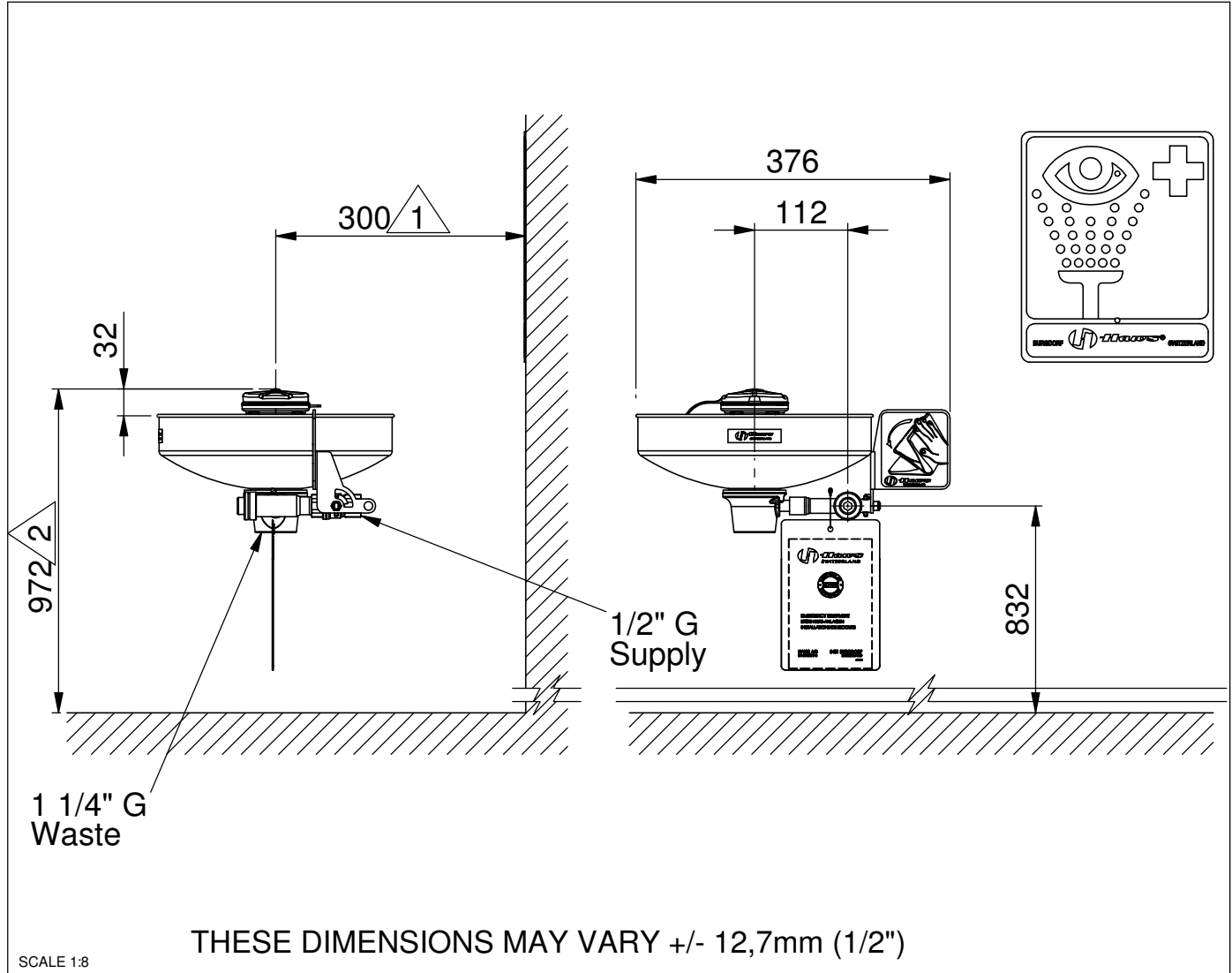


## Model 7460 Axion Eye Wash

No.2080056

NOTE TO INSTALLER: please leave this information with the maintenance department.



### Legally-stipulated dimensions:

- 1 Ensure that there is a minimum clearance of 150mm (6") with respect to the nearest wall or obstacle.
- 2 Height above floor level: 800mm - 1200mm (2' 7 1/2" - 3' 11 1/4").

Free access to the eyewash station 7460 Axion must be guaranteed all times. The operator is responsible for the observance of this requirement.



## Model 7460 Axiom Eye Wash

No.2080056

**Shower location:** The eyewash station 7460 Axiom must be installed in the vicinity of potential danger zones. It must be highly visible and easily accessible.

**Connection conduit:** You are recommended to use a 1/2" G conduit, capable of withstanding pressures of 2 - 6 BAR (30 - 90 PSI). The use of an inlet filter designed to prevent the entry of suspended particles and other impurities is also recommended.

**Water quality:** Eyewash stations require a supply of drinking water conforming to European standards or their equivalents in other countries.

**Water temperature:** The required water temperature should be determined by the user. The accepted ideal range is 15 - 35°C / 60 -95°F (but please ensure conformity with local regulations).

**Volume flow:** A minimum flow rate of 6 litres / 1,6 US gallons per minute must be maintained. The eyewash station must be capable of delivering this amount of water for at least 15 minutes.

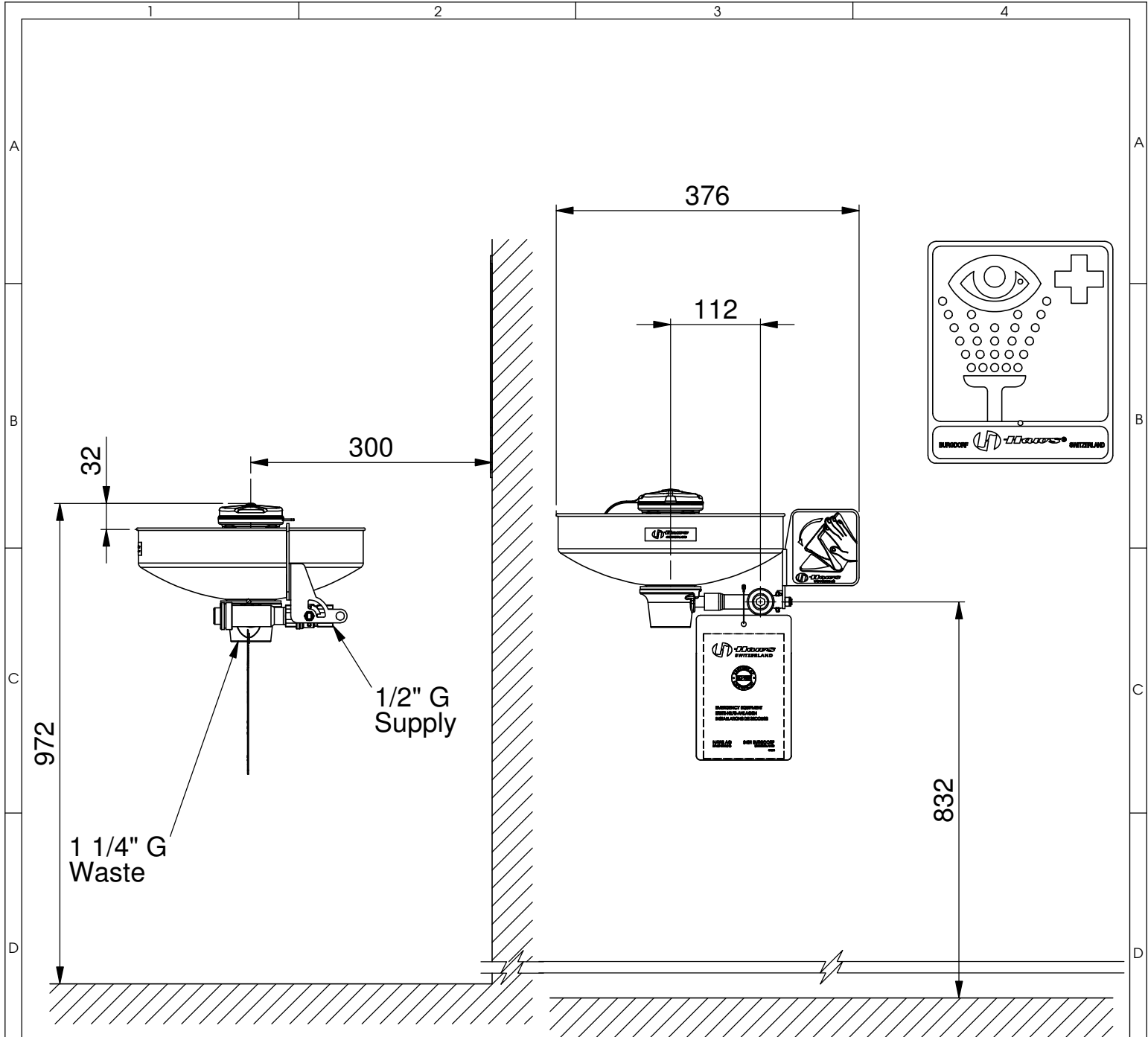
**Connection to plumbing system:** The inlet consists of a 1/2" G conduit with female-thread adapter, while the outlet is a 1 1/4" G threaded conduit.

### Regular inspection:

The eyewash station 7460 Axiom should be inspected at weekly intervals. The inspection tag should be dated and signed after each check.

### TROUBLESHOOTING

Problem	Repair-checklist
1. No flow	Check the main shutoff valve.
2. Insufficient flow of water	<ol style="list-style-type: none"><li>1. Check the line pressure. This should be at least 2 BAR / 30 PSI (dynamic).</li><li>2. Blocked flow, possibly due to the conduit not being correctly flushed out. Dismantle the T-piece, and clean the rubber flow-regulator.</li></ol>
3. Flow rate is not as specified	The flow conduit may be blocked (for remedy see above). The eyewash station may not have been set up correctly.
4. Water does not discharge correctly	Check the building's main drainage outlet. Note that it must have adequate capacity to handle the entire drainage system.



Weight: 2,8kg (6,2lbs)

THESE DIMENSIONS MAY VARY +/- 12,7mm (1/2")

# DATA SHEET



T +41 (0)34 420 60 00 CH3401 BURGDORF SWITZERLAND www.haws.ch  
F +41 (0)34 420 60 01 info@haws.ch

## TITLE

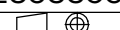
7460 Axion  
Eye Wash

## MATERIAL

SIZE PART NO.  
A4 2080056

REV.

SCALE 1:7



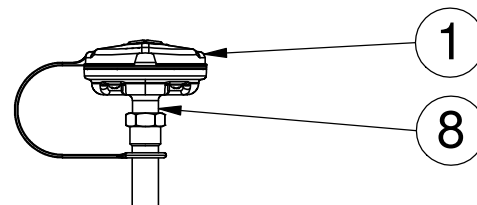
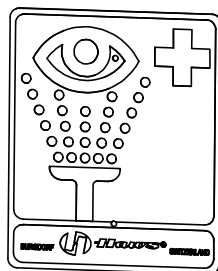
SHEET 3 OF 4

APPROVALS	DATE
DRAWN Jeannine Ruf	04.06.2010
CHECKED	
REVISED	10.10.2011
DRAW-NO.	
ECN NO.	

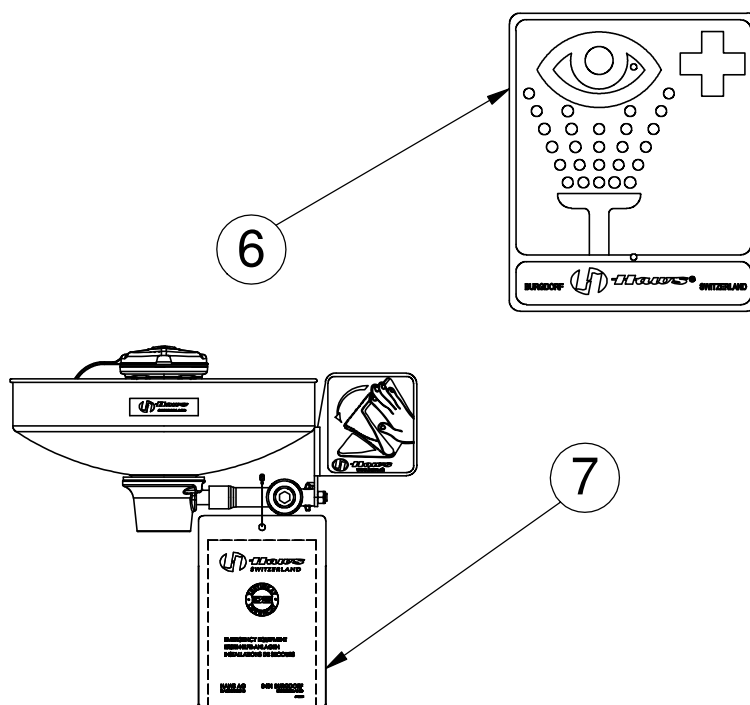
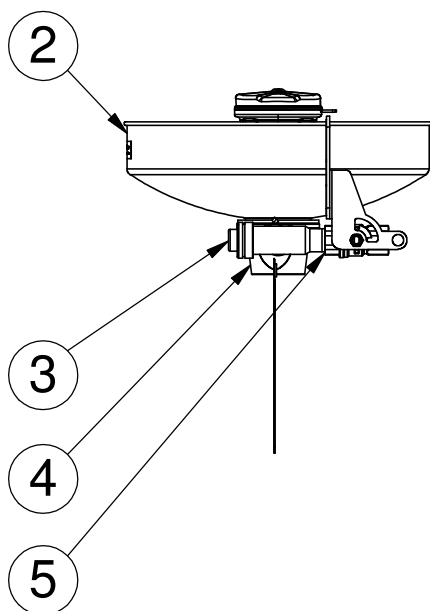
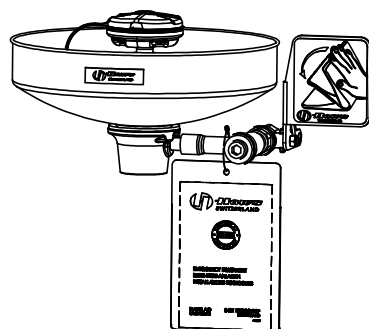
ZONE	REV	DESCRIPTION	ECN	DATE	BY
REVISIONS					
THIS DOCUMENT AND THE DATA DISCLOSED HEREIN OR HEREWITH IS NOT TO BE REPRODUCED, USED, OR DISCLOSED IN WHOLE OR IN PART TO ANYONE WITHOUT THE PERMISSION OF HAWS CORPORATION.					

# PARTS BREAKDOWN

ITEM	PART NU.	DESCRIPTION
1	SP65	Axion eye/face wash head
2	SP90	Bowl
3	SP509	Strainer
4	SP81	Bracket
5	SP229	Valve assembly
6	SP175	Eye wash sign
7	SP170	Test tag
8	SP37.5	Flow control



SP65 EYE WASH ASSEMBLY



## PARTS BREAKDOWN

**WHEN ORDERING PARTS PLEASE SPECIFY YOUR MODEL NUMBER**

APPROVALS	DATE
DRAWN Jeannine Ruf	04.06.2010
CHECKED	
REVISED	10.10.2011
DRAW-NO.	
ECN NO.	



BACHWEG 3  
CH3401 BURGDORF  
SWITZERLAND  
www.haws.ch  
info@haws.ch

TITLE  
7460 Axion  
Eye Wash

MATERIAL

SIZE	PART NO.	REV.
A4	2080056	

SCALE 1:7

SHEET 4 OF 4

ZONE	REV	DESCRIPTION	ECN	DATE	BY
		REVISIONS			
		THIS DOCUMENT AND THE DATA DISCLOSED HEREIN OR HEREWITH IS NOT TO BE REPRODUCED, USED, OR DISCLOSED IN WHOLE OR IN PART TO ANYONE WITHOUT THE PERMISSION OF HAWS CORPORATION.			