



Best-Seller



8317CTFP AXION

Freeze-protected Combination Shower

The flexible safety shower for extreme
weather conditions.

8317CTFP AXION

Item number: 10004782

Freeze-protected, cable-heated safety shower with integrated eyewash designed for harsh outdoor environments. Integrated heating cables and full insulation ensure reliable operation, even in **extreme temperatures as low as -34°C**.



8317CTFP AXION in brief

- Withstand temperatures as low as **-34°C**, thanks to its **cable-heated** and **insulated features**.
- Ambient temperature thermostat ensures **energy-saving and reliable freeze protection**.
- Bleed valve **prevents the shower from freezing** in the case of a power outage.
- Additional body spray hose offers **more rinsing possibilities**.
- Factory-tested electrical system and pressure tested piping make **installation easy and trouble-free**.
- Equipped with patented **AXION Technology** for reliable and effective emergency response.

Main Benefits of the 8317CTFP AXION



1. Best-selling Product

With **over 1,000 units installed**, the Haws 8317CTFP AXION is a **proven solution** for dependable safety in demanding workplaces.



2. Superior Freeze Protection

Engineered for extreme conditions, the integrated **cable heating** and **full insulation** ensure reliable operation in temperatures as low as **-34°C**. The **bleed valve** provides additional security by preventing freezing during power outages.



3. Enhanced Employee Safety

The freestanding design enables easy installation near hazard zones, **minimizing emergency response times** and maximizing employee protection. Flexible top or bottom water supply options make it a versatile solution for any workspace.



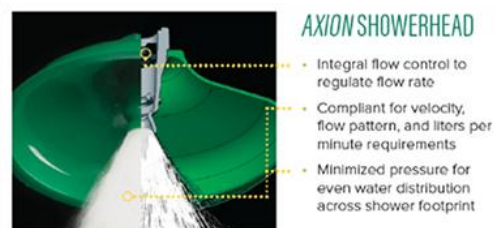
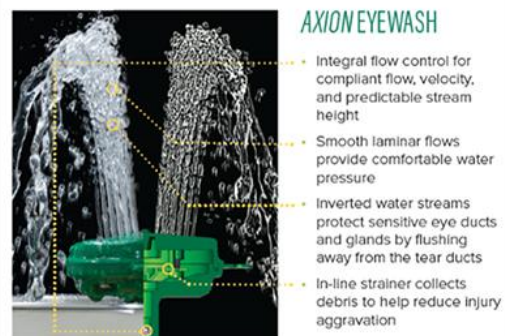
4. Compliance with Safety Standards

The safety shower meets **EN 15154 and ANSI Z358.1** standards, making it suitable for workplaces around the world and ensuring compliance with safety regulations.

Unique AXION Technology

Haws' patented AXION technology reliably ensures effective first aid by solving common challenges found in traditional safety showers and eyewash stations. Key benefits of AXION Technology include:

- Simultaneous and smooth rinsing of both eyes with a non-injuring water jet.
- Smooth and controlled water streams for both the eyewash and drench shower, ensuring effective rinsing and minimizing further harm to the victim during emergencies.
- Reliable simultaneous operation of both shower and eyewash functions, ensuring effective and compliant emergency response.



5 Convincing Features of the 8317CTFP AXION

1. **1-1/4" Piping:** Rugged steel piping provides high stability, durability, and guarantees efficient water flow.
2. **Powder-coated cast Floor Flange:** The massive cast-iron base ensures physical stability and withstands unintended impacts.
3. **Durable Ball Valves:** Stay-open ball valves are equipped with a stainless-steel ball and stem, providing a corrosion-resistant and long-lasting solution.
4. **Fully Assembled and Pressure-Tested:** Pre-built and pressure-tested to ensure the shower is completely leak-free before shipment. This guarantees a hassle-free installation on-site.
5. **Reliable Spare Parts Service:** Includes valves, showerheads, safety signs, activation elements, and more to ensure long-term reliability and continued operation.

Applications

- Designed for medium to high-risk industrial environments exposed to extreme cold.
- Ideal for chemical plants, oil and gas facilities, ports, heavy industry, power plants, water treatment plants, storage terminals, and other applications where extreme weather conditions demand reliable safety solutions.

International Certifications

Die combination safety shower 8317CTFP AXION meets the requirements specified in the following standards or normative documents:

- EN 15154-1:2006
- EN 15154-2:2006
- EN 15154-5:2019
- ANSI Z358.1-2014 (R2020)

Technical Data 8317CTFP AXION:

- **Flow rate drench shower:** 76 liters/minute
- **Flow rate eyewash:** 14 liters/minute
- **Flow rate additional body spray hose:** >14 liters/minute
- **Voltage:** 230 VAC
- **Rated Power:** 150 W
- **Dimensions (H x W x D):** 2470 x 460 x 921 mm
- **Water inlet:** 1-1/4"
- **Water outlet:** none, floor drain recommended
- **Package size (H x W x D):** 260 x 40 x 100 cm
- **Packaging weight:** 47 kg
- **Country of Origin:** Switzerland

Selected Options



Instantaneous electric water heater Model 9326CE

The Indoor/outdoor Electric Water Heater is engineered to provide immediate tepid water. In accordance with EN and ANSI guidelines, tepid water, ideally between 20°C and 25°C, ensures that victims can use the emergency equipment for the recommended 15 minutes without the risk of hypothermia.



Thermostatic Mixing Valve Model 9201E

(item number 10005250):

The thermostatic mixing valve is designed to deliver tepid water by precisely blending hot and cold water to an outlet temperature in accordance with EN and ANSI guidelines. A tepid range between 20°C and 25°C ensures safe use of emergency showers and helps prevent hypothermia.



Alarm System Model 9001.230V.DPDT (item number 10009288):

The alarm system includes a signal horn and flashing light to alert nearby personnel when the safety shower is activated. The unit can also transmit electrical signals to external control systems.



Stainless Steel Showerhead Model SP829SS AXION

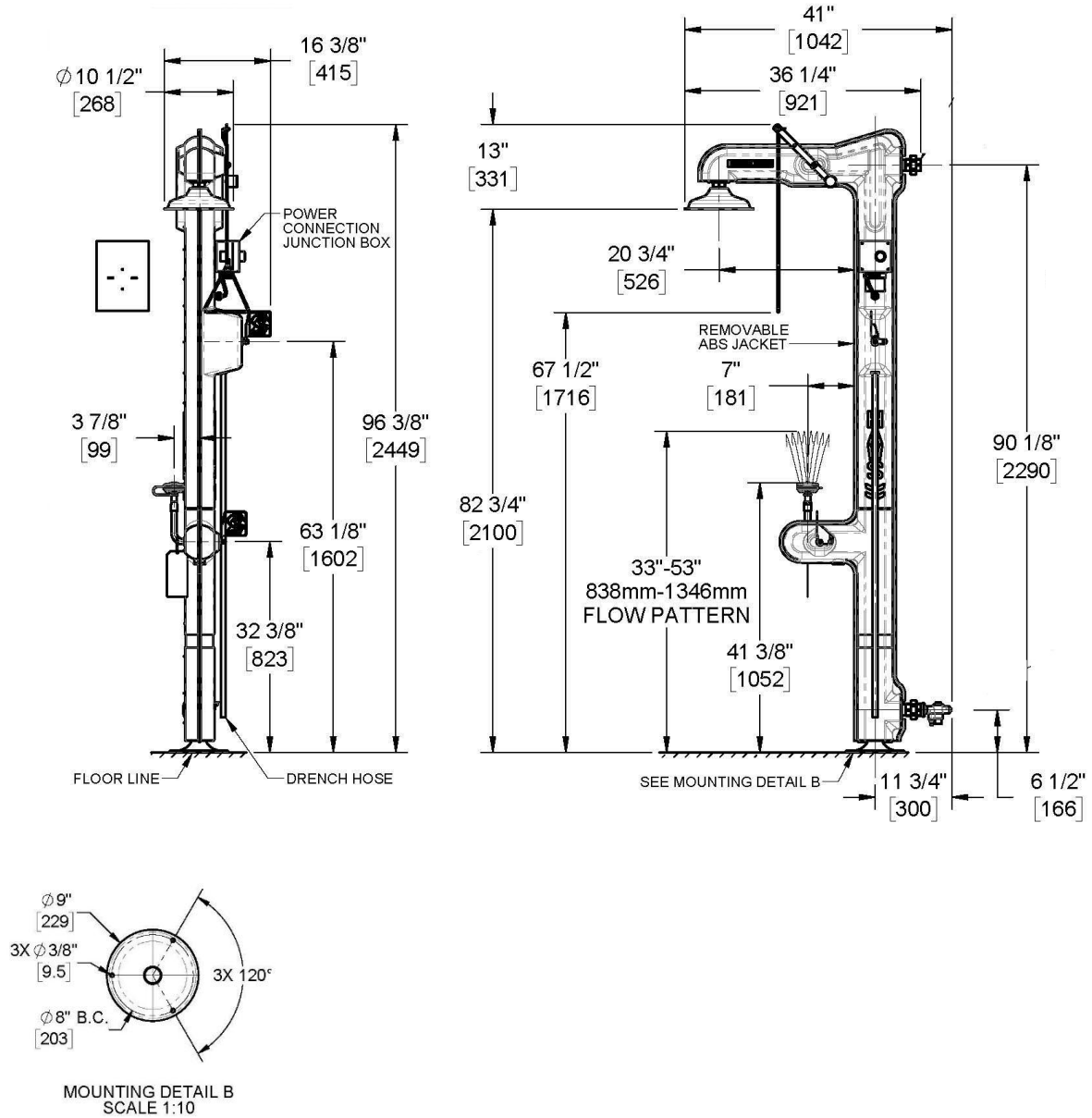
(item number 10006269):

The AXION stainless steel showerhead is a durable alternative to the standard ABS plastic version. Designed for demanding environments, it offers increased resistance to impact, chemicals, and UV exposure.



More information on 8317 CTFP AXION online

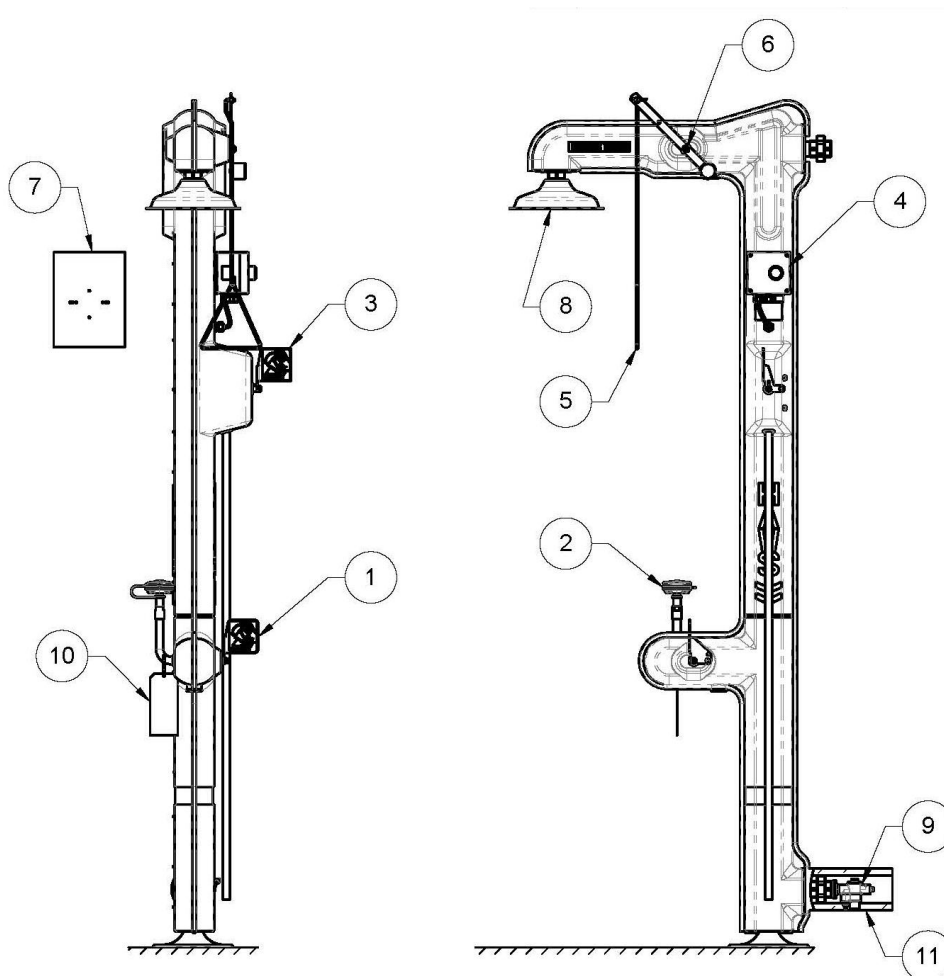
Technical Drawing 8317 CTFP AXION



Dimensions in brackets, in drawing space, are metric [mm]

Spare Parts List

Pos.	Item	Description	Item number
1	SP237	Valve assembly	10006176
2	SP65CTFP	Eyewash head	10006251
3	SP239	Valve assembly	10006179
4	SP155	Thermostat	10003556
5	SP200	Pull rod	10002978
6	SP262	Valve assembly	10006197
7	SP178	Shower safety sign	10003218
8	SP829 AXION	Shower head	10006266
9	SP158B	Freeze-protection bleed valve assembly	10004230
10	SP170	Test Tag	10006134



Haws EMEA

Serving customers in Europe, Middle East, and Africa.

Bachweg 3
3400 Burgdorf
Switzerland

+41 34 420 60 00

info@haws.ch

www.haws.ch

