

Bachweg 3, 3400 Burgdorf, Switzerland
Phone +41 (0) 34 420 60 00 Fax +41 (0) 34 420 60 01
E-mail: info@haws.ch website: www.haws.ch

No. 02080162 (1)

**Model 8300 AXION
(Item Number 10004736)
Shower & Eye/Face Wash**

NOTE TO INSTALLER: Please leave this information with the Maintenance Department.

SHOULD YOU EXPERIENCE DIFFICULTY WITH THE INSTALLATION OF THIS MODEL PLEASE CALL:

CUSTOMER SUPPORT: +41 (0) 34 420 60 00

LOCATION OF UNIT: The Model 8300 AXION Emergency Shower should be installed in close proximity to potential accident areas. It should be clearly identified, free from obstructions and easy to access.

SUPPLY LINE: The minimum recommended line size is 1 1/4" G with 30-90 psi (2-6 ATM) flowing pressure. Where sediment or mineral content is a problem, an inlet filter is recommended.

PLUMBING CONNECTIONS: The inlet supply is female 1 1/4" G. Waste outlet is female 1 1/4" G.

INSTALLATION PROCEDURE

Refer to Installation Drawing for clarification. Check parts list to ensure all required parts are included. Use KISLING ERGO 4207 sealant on all metal-to-metal connections.

- STEP 1:** Prepare the emergency shower foundation by using the floor flange assembly as a template. Locate the three holes for the M8 x 150mm (3/8-16 UNC x 6") anchor bolts (not supplied). They should extend 25mm (1") above the floor level.
- STEP 2:** Once the concrete foundation is ready (dry), assemble the floor flange assembly to the anchor bolts; then securely fasten with M8 (3/8-16 UNC) Hex nuts and M8 (3/8") washers (not supplied). Seal and tighten floor flange and tee (1 1/4") making certain the waste tee is facing the proper location.
- STEP 3:** Assemble nipple (1 1/4" x 610mm) to the floor flange assembly and tighten with a pipe wrench.
- STEP 4:** Assemble the eyewash loop assembly to the 610mm nipple from Step three. Connect the pipe wrench to the galvanized nipple between the two tees to avoid damage.
- STEP 5:** Assemble in the following order:
Attach nipple (1 1/4" x 610mm) and tee (1 1/4") to the loop assembly.
Attach nipple (1 1/4" x 610mm) and tee (1 1/4" x 1 1/4" x 1") to tee (1 1/4")
Attach valve assembly to tee (1 1/4" x 1 1/4" x 1").
- STEP 6:** Assemble showerhead onto street elbow (1").
- STEP 7:** Assemble the sign onto the unit. Use the clamps provided to mount the sign onto the upright. The sign should be positioned for maximum visibility.
- STEP 8:** Before connecting the supply water line to the emergency shower, **FLUSH THE LINE THOROUGHLY.**

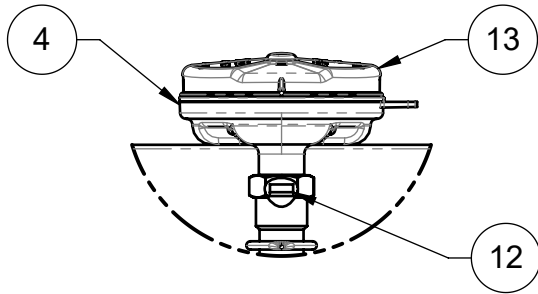
TROUBLESHOOTING	
PROBLEM	REPAIR CHECKLIST
1. No flow.	1. Check the main shut-off valve.
2. Water leak between joints or fittings.	2. Tighten loose connections. If leak persists, the application of hot water will sometimes reseal improperly applied joint compound. After 30 minutes wait and retest. A persistent leak will necessitate reassembly and additional sealant.
3. Insufficient water flow, shower and eyewash.	3. Verify minimum 30 psi (2 ATM) flowing supply line pressure.
4. Water does not drain properly.	4. Check your drain system for debris. Check the main waste line of your building to see if it does handle the capacity required for the entire drainage system.
5. Insufficient water flow on eyewash, however, shower is sufficient.	5.a. Verify minimum 30 psi (2 ATM) flowing supply line pressure.
	b. Probable clogging of flow control due to inadequate line flushing. Unscrew eye/face wash head and remove the four screws to disassemble head. Clean flow control and reassemble head. See SP65 Installation Drawing for details.
	c. Remove cap located on Inline Strainer using a 3/8" allen wrench to access and clean filter screen.
6. Eyewash or face wash streams do not meet at desired eye level or are not balanced.	6. Possible blocked flow control see above solution. (Possible non-leveled eyewash assembly.)
7. Insufficient water flow at the showerhead, however, eyewash is sufficient.	7.a. Probable clogging of flow control inside shower head. Unscrew shower head off of elbow and clean rubber flow control.

For more information about Haws products, see our website: www.haws.ch

© 2024 Haws® Corporation – All Rights Reserved

HAWS® and other trademarks used in these materials are the exclusive property of Haws Corporation.

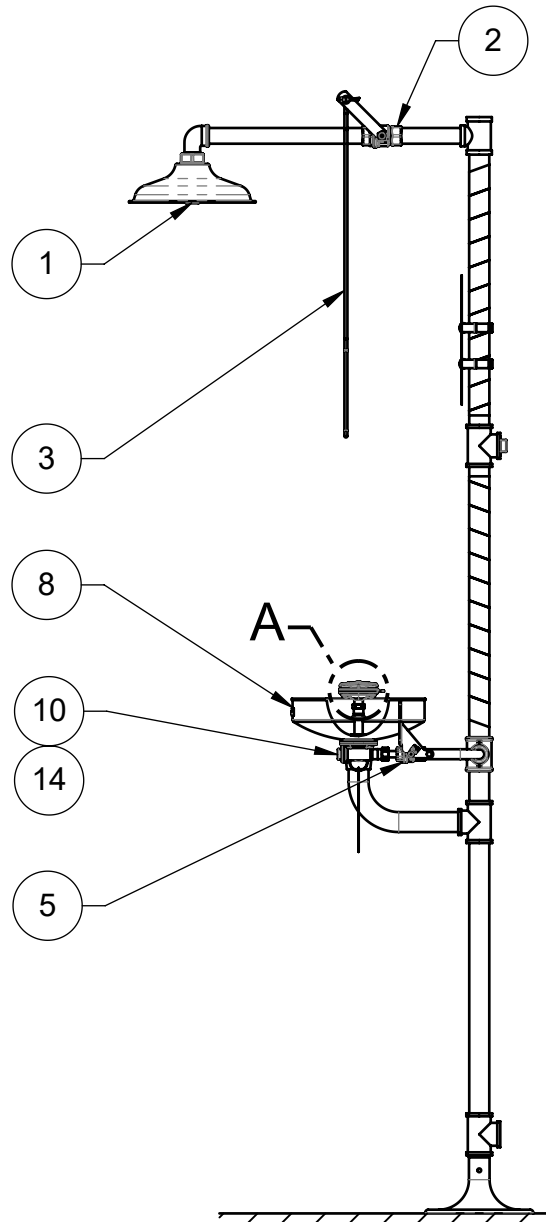
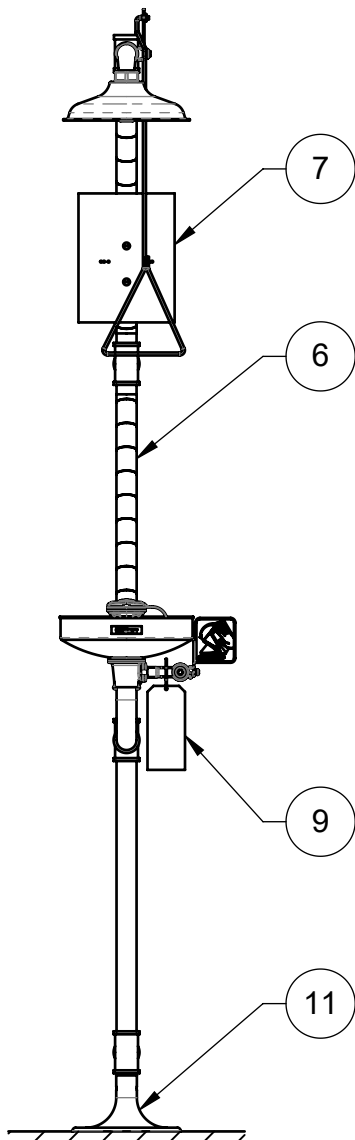
PARTS BREAKDOWN



DETAIL A
SCALE 1 : 3

OPTIONAL -

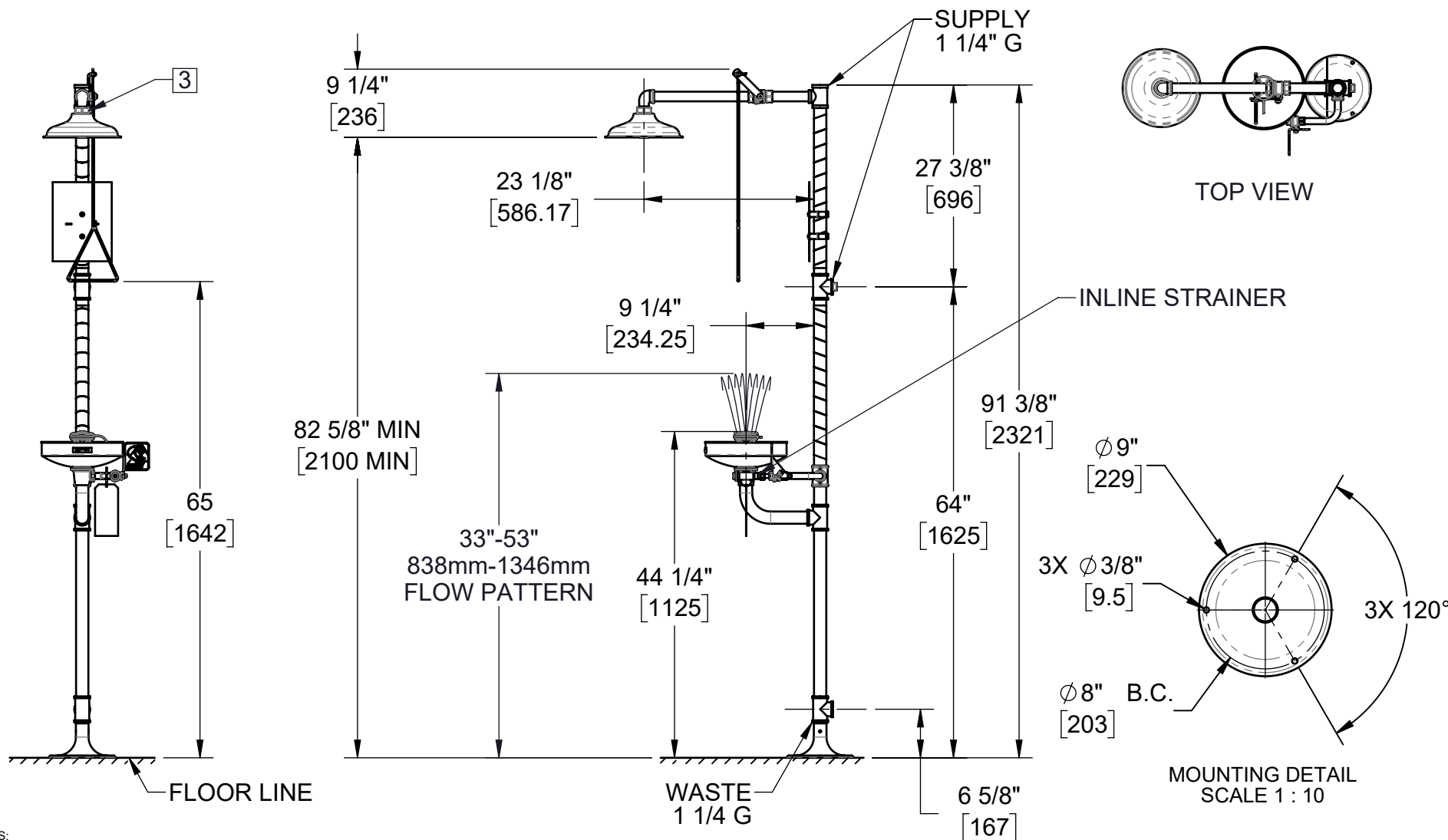
ITEM	DESCRIPTION	MODEL NO.	ITEM NO.
1	AXION SHOWER HEAD	SP829	10006266
2	VALVE ASSEMBLY	SP260	10006187
3	PULL ROD	SP200	10002978
4	AXION EYE/FACE WASH HEAD	SP65	10001851
5	VALVE ASSEMBLY	SP225	10006161
6	STRIPE TAPE	SP185	10002079
7	SHOWER SIGN	SP178	10003218
8	BOWL	SP90	10006278
9	TEST TAG	SP170	10006134
10	INLINE STRAINER	SP509	10006227
11	FLOOR FLANGE	SP75	10006262
12	FLOW CONTROL	SP37.5	10001711
13	DUST COVER	SP9091	10000718
14	REPAIR KIT FOR SP509	VRKEWSTR	10006353
--	FOOT TREADLE (NOT SHOWN)	SP220	10003587



HAWS AG
BACHWEG 3
3400 BURGDORF SWITZERLAND
T +41 (0)34 420 60 00 F +41 (0)34 420 60 01
E-MAIL: INFO@HAWS.CH
WEBSITE: WWW.HAWS.CH


ECN: 0001	REV. ECN: 0001	BY: DN	MODEL(S)	PART NUMBER
DRAWN: DN	DATE: 12/9/2024	CHKD: IR	8300 AXION (10004736)	02080162
APPROVED: DN	DATE: 12/11/2024	SCALE: 1:16	DRAWING TYPE: PARTS BREAKDOWN	REVISION 1
			SIZE: A	SHEET 1 OF 1

WHEN ORDERING PARTS, PLEASE
SPECIFY ITEM NUMBER



NOTES:

1. WHEN INSTALLING THIS UNIT, LOCAL CODES SHOULD BE ADHERED TO FOR INSTALLATION DIMENSIONS (LOCATIONS), WASTE AND SUPPLY REQUIREMENTS OTHER THAN SHOWN
2. TO COMPLY WITH ANSI Z358.1-2014 FOR EMERGENCY EYEWASH OR EYE/FACE WASH AND SHOWER EQUIPMENT:
 - UNIT SHALL BE INSTALLED IN ACCORDANCE WITH MANUFACTURER'S INSTRUCTIONS AND ACCEPTABLE PLUMBING PRACTICES.
 - EYEWASH OR EYE/FACE WASH SHALL BE POSITIONED SUCH THAT FLUSHING FLUID PATTERN IS NOT LESS THAN 33" (838 mm) AND NOT GREATER THAN 53" (1364 mm) FROM SURFACE ON WHICH USER STANDS; AND 6.0" (153 mm) MINIMUM FROM WALL OR NEAREST OBSTRUCTION.
 - SHOWER SHALL BE POSITIONED SO THAT SHOWER HEAD IS NOT LESS THAN 208.3 CM (82 IN.) NOR MORE THAN 243.8 CM (96 IN.) FROM SURFACE ON WHICH USER STANDS.
 - SHOWER SPRAY PATTERN SHALL HAVE A MINIMUM DIAMETER OF 50.8 CM (20 IN.) AT 152.4 CM (60 IN.) ABOVE SURFACE ON WHICH USER STANDS, AND CENTER OF SPRAY PATTERN SHALL BE LOCATED AT LEAST 40.6 CM (16 IN.) FROM ANY OBSTRUCTION.
3. DO NOT USE REGULAR PIPE SEALANT. IF NECESSARY USE DOW CORNING 832 SEALANT PLACING 5 SMALL BEADS ON THE MALE THREADS, JUST ABOVE THE FIRST THREAD.
4. DIMENSIONS MAY VARY BY $\pm 1/2$ INCH [13mm].
5. DIMENSIONS IN BRACKETS, IN DRAWING SPACE, ARE METRIC [mm]

 <p>Haws Since 1906</p>				<p>HAWS AG BACHWEG 3 3400 BURGDORF SWITZERLAND T +41 (0)34 420 60 00 F +41 (0)34 420 60 01 E-MAIL: INFO@HAWS.CH WEBSITE: WWW.HAWS.CH</p>			
ECN: 0001	REV. ECN: 0001	BY: DN	MODEL(S)	PART NUMBER		02080162.D	
DRAWN: DN	DATE: 12/9/2024	CHKD: IR	8300 AXION (10004736)	REVISION		1	
APPROVED: DN	DATE: 12/11/2024	SCALE: 1:20	DRAWING TYPE:	INSTALLATION	SIZE: A	SHEET 1 OF 1	